

NILFISK OZ 1

220 - 240V



INFORMATION & OPERATING INSTRUCTIONS



WARNING:

OZONE IS A TOXIC GAS. FOLLOW ALL SAFETY PRECAUTIONS

USE IN UNINHABITED AREAS ONLY. CONSULT MATERIAL DATA SAFETY SHEET (MSDS) BEFORE USE.

WAIT TWO HOURS BEFORE ENTERING A TREATED AREA TO VENTILATE. VENTILATE FOR ONE HOUR (MINIMUM) BEFORE RE-INHABITING THE SPACE.

DO NOT USE IN AREAS WITH OPEN FLAMES

READ ALL INSTRUCTIONS BEFORE OPERATING

NOTE: this machine is only suitable for commercial use, for example in hotels, schools, hospitals, factories, shops, and offices other than and **NOT** for normal residential housekeeping purposes.

RECORD AND SAVE THE FOLLOWING INFORMATION:

Serial Number: _____ **Model:** NILFISK OZ 1

Purchase Date: _____

Write the name and phone number of your distributor: _____

IMPORTANT SAFETY INSTRUCTIONS

This machine is only suitable for commercial use, for example in hotels, schools, hospitals, factories, shops, and offices other than and **NOT** for normal residential housekeeping purposes.

NOTE: READ ALL INSTRUCTIONS BEFORE USING THIS MACHINE

WARNING: ozone is not flammable, but it can increase fire danger by providing more oxygen in an area. DO NOT use in areas with open flames.

When using any electrical appliance, basic precautions should always be followed, including the following:

WARNING! DO NOT INHALE FUMES



To reduce the risk of fire, electric shock, or injury:

- **USE IN UNINHABITED AREAS ONLY.**
- To avoid electric shock, do not expose to rain or snow. Store, and use, indoors.
- Ensure that all air flowing into the machine is clean. Keep the air intake filter clean.
- If the machine is not working as it should, has been dropped, damaged, left outdoors or flooded with water, return it to a service center.
- The appliance is not to be used by children or persons with reduced physical, sensory or mental capabilities or lack of experience and knowledge, unless they have been given supervision or instruction. Supervised children shall not play with the appliance.
- If the supply cord is damaged, it must be replaced by the manufacturer, its service agent or similar qualified persons to avoid a hazard.
- Use only as described in this manual. Use only the manufacturer's recommended attachments.
- Do not pull by the cord, use the cord as a handle, close a door on the cord, or pull the cord around sharp edges or corners. Keep the cord away from heated surfaces. To unplug, grasp the plug, not the cord.
- Do not handle the plug, the cord, or the machine with wet hands.
- Turn off all controls before unplugging.
- Unplug the machine from the power outlet before cleaning or servicing.
- If the cord or prongs become damaged have it replaced by an authorized Nilfisk service technician or partner.
- Do not put any object into openings. Do not use with any opening blocked; keep free of dust, lint, hair, smoke, and anything that may reduce air flow or dirty the ozone producing electrodes.

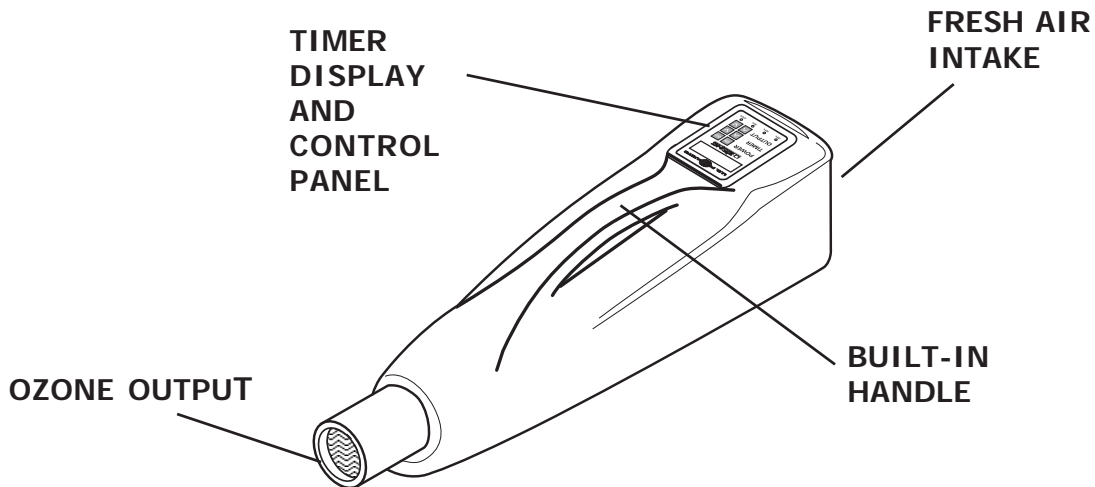
INSPECTION:

Carefully unpack and inspect your Nilfisk OZ 1 for shipping damage. Each machine is tested and inspected before shipping. Any shipping damage incurred is the responsibility of the carrier who should be notified immediately.

CLEANING AND MAINTENANCE:

There is no scheduled maintenance required on your Nilfisk OZ 1 other than cleaning or replacing the filter at the air intake, as needed. To access the filter, remove the plastic cover by gently pulling on a corner of it. The stainless steel filter can be cleaned with any detergent. Clean the body with a mild all-purpose detergent, and protect it with an automobile interior polish.

KNOW YOUR MACHINE:



- 1 Set the timer
- 2 Set the ozone amount
- 3 Turn the machine ON

**SEE COMPLETE
OPERATION
INSTRUCTIONS**



TURN UNIT ON
OR OFF

SET THE TIMER

SET THE
% AMOUNT

Set the amount of ozone volume to 25%, 50%, 75%, or 100%

SET-UP AND USE INSTRUCTIONS

- ✓ All cleaning and maintenance work should be completed before using the Nilfisk OZ-1 machine.
- ✓ Ozone treatment should be the final step in room maintenance.
- ✓ The air flowing into the machine must be clean and dry.
- ✓ Keep the filter at the fresh air intake clean.

TIME GUIDELINES:

This Nilfisk OZ 1 unit will control biological contamination and odor in areas up to 1133 m³.

Many variables determine the actual length of time it takes to complete the decontamination with ozone.

Some of the variables:

- | Type of odor causing contaminant, for example: mold, smoke, animal urine
- | Location in the space and size of the contaminated area
- | Size and configuration of the space
- | What types of articles are in the space -- furniture, carpet, hard floor, empty space

Ozone has a half-life of about 15 minutes in open areas (can be hours in closed areas) and this increases with lower temperature and lower humidity.

Use the following times as a basic guideline:

Hotel room - 60 minutes

Automobile - 20 to 30 minutes

Fire and flood restoration: 12 to 72 hours

It is always best to repeat the process if treatment did not resolve the problem rather than treating an area for longer than you believe it will take.

Wait two hours after the treatment has ended before entering the space to ventilate. Allow the space to ventilate for one hour (minimum) before re-inhabiting the space.

NOTE: Ozone is a toxic gas. Follow all safety precautions



OPERATION:

For buildings:

1. Make certain all people, pets, and plants are out of area. Close all windows and doors.
2. Ensure that the filter in front of the clean air intake is installed and is clean.
3. Place the Nilfisk OZ 1 on a shelf, cabinet, or tabletop as high as possible in the area to be treated. Ozone is slightly heavier than air, so it will naturally drift down. If the treatment area is large or is divided into different spaces, the use of fans to gently move the ozone around can be helpful.
4. Plug the power cord into a power outlet.

5. Timer Operation:

Momentarily pressing the UP timer button for one second will increase the time setting by one minute at a time. Press the button for 1-3 seconds to change the time value by two minutes per second. Hold the button for longer than 3 seconds and the time setting will change in 20 minutes increments.

The maximum time setting is 29:59 hours. After reaching the maximum time, if you continue to press the UP button, the timer will wrap back to 00:00 and then continue increasing. When the time is being decreased and it reaches 00:00, it will wrap to 29:59 and continue decreasing.

6. Output Volume:

Select the desired power level: 25%; 50%; 75% 100%. The Nilfisk OZ 1 always defaults to 100% when you plug it in. When the output level is set to 100%, the machine makes ozone continuously until the timer counts down to 00:00 or the OFF button is pressed.

At other power level settings, the machine will produce ozone for the percentage of a minute that the level is set to. For example, if the output level is set to 75%, the machine will produce ozone for 75% (45seconds) of each minute, and 25% (15 seconds) of each minute only the fan will run. At the 50% setting, ozone is generated for 30 seconds of each minute, and at 25%, the ozone generation lasts for 15 seconds of each minute followed by 45 seconds of no ozone output. On any setting other than 100%, the ozone generator will be cycling the ozone ON and OFF. The fan will run the entire time.

7. Turn the unit on by pressing the ON button. Leave the area.
8. When treatment is complete and the timer has run out, the machine will turn off, however the machine will still be connected to electrical power. When you return to the treatment area, unplug the ozone machine and ventilate the area completely until all smell of ozone is gone. Do NOT allow people, pets or plants back into the area until the treatment area has been ventilated and all smell of ozone is dissipated.
9. If any contaminant smell lingers after all the ozone smell is gone, retreat the area.

For Automobiles:

WARNING!

Important!: Only use Nilfisk original accessory, car kit part number **600400100**, for treatment in automobiles.



Refer to Figure 1 and Figure 2 below.

1. Install the hose over the electrode chamber. Secure the hose with the hose clamp.
2. Set the Nilfisk OZ 1 on top of the car, or on a table or cart next to the car.
3. Install the foam block into a partially open window, and place the open end of the hose through the hole in the foam.
4. Set the timer and the output level.
5. Turn ON the machine.
6. When treatment is complete, ventilate the car completely. Repeat treatment if necessary.

Figure 1:

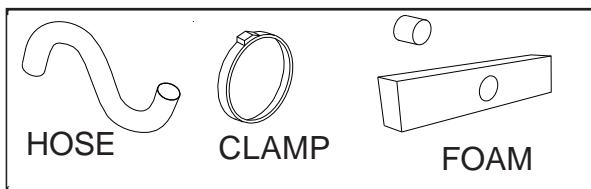
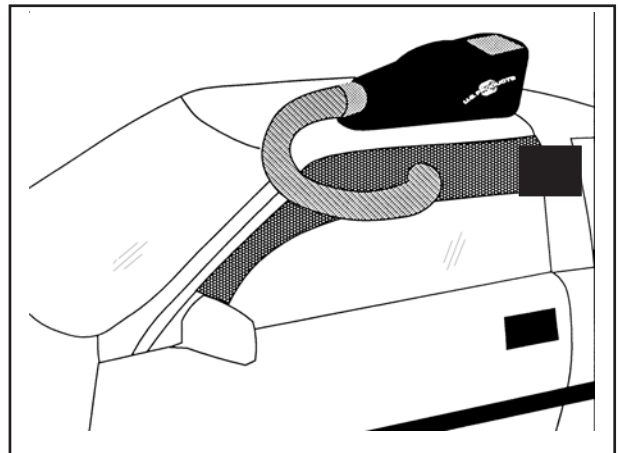
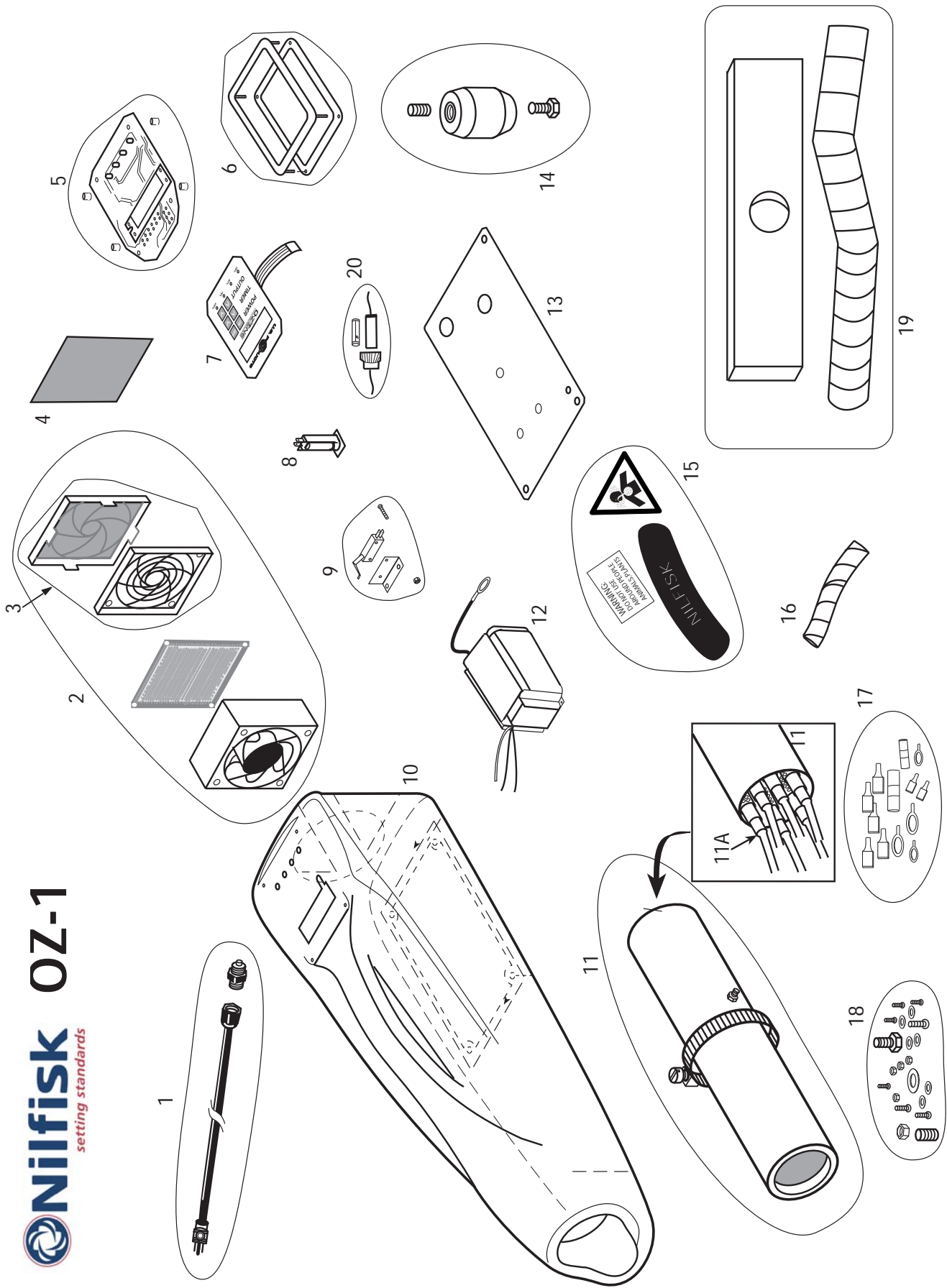


Figure 2:



CAUTION: BE SURE TO KEEP THE AIR INTAKE FILTER CLEAN



OZ-1

PART LIST

220 - 240V

<u>ITEM</u>	<u>QTY</u>	<u>PART No.</u>	<u>DESCRIPTION</u>
1	1	600701032	Power cord and retainer, EU
	1	600701033	Power cord and retainer, UK
2	1	600701014	Fan kit
3	1	600701036	Fan guards and filter kit
4	1	600701028	Replacement filter kit (4 per kit)
5	1	600701015	Control board with timer display kit
6	1	600701021	Bezel and gasket kit
7	1	600701016	Touch pad
8	1	600701019	Circuit breaker
9	1	600701018	Safety switch kit
10	1	600701038	Machine body, empty
11	1	600701026	Electrode chamber, complete
11A	3	600701025	Electrode pair
12	1	600701017	Transformer kit
13	1	600701023	Bottom plate kit
14	1	600701020	Terminal block kit
15	1	600701034	Label kit
16	1	600701024	Wiring loom, 33mm total
17	1	600701037	Wiring Connectors kit
18	1	600701035	Hardware kit
19	1	600400100	Hose and foam kit
20	1	600701039	Fuse and holder kit

TROUBLESHOOTING:



CAUTION:

ALWAYS UNPLUG THE MACHINE BEFORE YOU DO ANY TROUBLESHOOTING

IF THIS OCCURS -- CHECK THIS

NO POWER	Make sure the power cord is plugged into an operational outlet. Look at the circuit breaker on the bottom of the machine, to make sure it has not tripped. Check the internal safety switch to make sure it is being activated when the bottom cover is installed.
TIMER DOES NOT WORK	The digital display has segments missing from some numbers. The timer \wedge \vee buttons do not change the time display. The time display does not change as time passes.
CAN NOT SELECT THE % OF OZONE	The % button does not work; the amount of ozone light does not move. The % button does work, but one or more of the red lights does not turn on.



WARNING: Use only original Nilfisk spare parts in the ozone machine

SPECIFICATIONS AND FEATURES:

Output volume:	Variable
Maximum Output:	2.2 grams/hour; 6.6 ppm
Timer:	Digital, 0 to 29 Hours
Generation Method:	Patented, high-density ceramic and stainless steel electrodes
Air Flow:	2.83 m³/minute
Deminsions:	55.9 L X 20.3 H X 18 W cm
Weight:	5.85 kg

- Features:**
- Rugged construction means reliability
 - No maintenance of plates or UV tubes
 - Over-load protection

CAUTION: BE SURE TO KEEP THE AIR INTAKE FILTER CLEAN

NOTES: