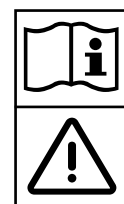
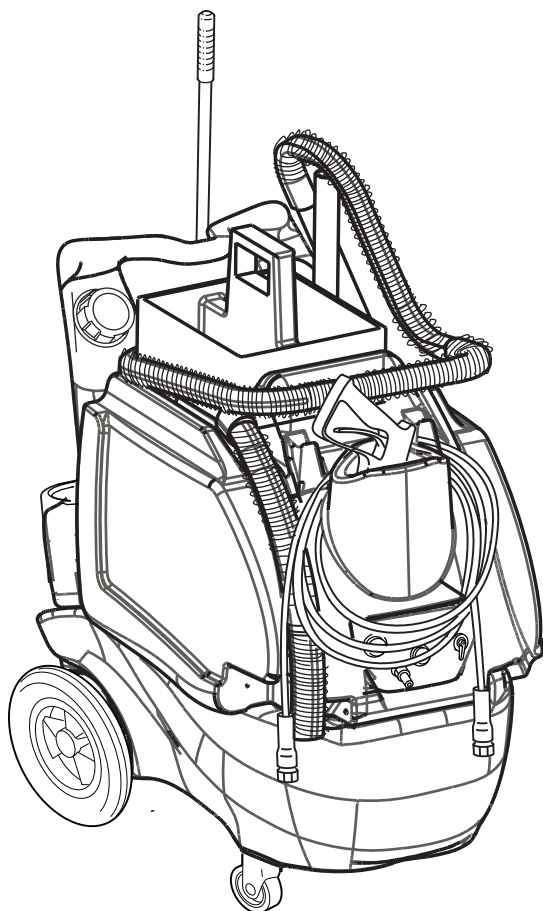


APC 328

INSTRUCTIONS FOR USE-ORIGINAL INSTRUCTIONS
AND PARTS LIST



Models: 600303281, 600303282

5/10 revise 7/10
FORM NO. 56041948

IMPORTANT SAFETY INSTRUCTIONS

This machine is only suitable for commercial use, for example in hotels, schools, hospitals, factories, shops, and offices other than normal residential housekeeping purposes.

When using any electrical appliance, basic precautions should always be followed, including the following:

WARNING!

To reduce the risk of fire, electric shock, or injury:

- Do not leave the machine unattended when it is plugged-in. Unplug the unit from the power outlet when not in use.
- Always use a defoamer when foaming occurs to prevent damage to vacuum motor(s).
- Unplug the machine from the power outlet before cleaning or servicing.
- To avoid electric shock, do not expose to rain or snow. Store, and use, indoors.
- Wear hearing protection if desired.
- Do not allow to be used as a toy. Close attention is necessary when used near children.
- Use only the manufacturer's recommended attachments.
- Inspect the power cord regularly for damage, such as cracking, ageing, or damaged insulation. Replace the power cord with the same type as original if any damage is found. Do not use with damaged cord or plug.
- Use approved chemicals only. Never use solvents.
- Do not let the pump run dry.
- If the machine is not working as it should, has been dropped, damaged, left outdoors or flooded with water, return it to a service center.
- Do not pull the machine by the cord, do not use the cord as a handle, close a door on the cord, or pull the cord around sharp edges or corners. Do not run the machine over the cord. Keep the cord away from heated surfaces. To unplug, grasp the plug, not the cord.
- Extension cords must be 12 gauge and no longer than 15 m. Replace the cord or unplug immediately if the ground prong becomes damaged.
- Never fill the tank with water above 54° C.
- Do not put any object into openings. Do not use with any opening blocked; keep free of dust, lint, hair, and anything that may reduce air flow.
- Keep loose clothing, hair, fingers, and all parts of body away from openings and moving parts.
- Do not pick up anything that is burning or smoking, such as cigarettes, matches, or hot ashes, or any health endangering dusts. Do not use to pick up flammable or combustible liquids such as gasoline or use in areas where they may be present.
- Turn off all controls before unplugging.
- Use extra care when cleaning on stairs.
- Liquid ejected at the spray nozzle could be dangerous as a result of its temperature, pressure, or chemical content.

SAVE THESE INSTRUCTIONS

INSPECTION:

Carefully unpack and inspect your APC 328 for shipping damage. Each machine is tested and inspected before shipping. Any shipping damage incurred is the responsibility of the carrier. You should notify the carrier immediately if you notice damage to the box or to the machine or parts.

CLEANING SOLUTIONS:

We recommend liquid cleaning chemicals. Powder chemicals may be used, but unless mixed very thoroughly they could cause a build-up in the pump, lines, heat exchanger and/or quick disconnects. Any problem caused by a chemical build-up is not covered by warranty. Use a neutral cleaner with a pH between 5 and 10 to avoid premature wear of the pump, seals, and/or other components.

MAINTENANCE:

For optimum performance flush the machine with clear water at the end of each working day. Once a month, minimum, run a flushing compound through the machine to break up any mineral or chemical build-up that may have formed. The vacuum motor and the pump do not require any scheduled maintenance; however, the motor may require replacement brushes after 1000 - 1500 hours. Clean the body with an all-purpose detergent, and protect it with an automobile interior polish. Lubricate the wheels, castors, and quick disconnects with an all purpose silicone spray. Refer to the maintenance schedule on page 9.

PARTS AND SERVICE:

Repairs, when required, should be performed by your authorized distributor who maintains an inventory of original replacement parts and accessories. Call the distributor from whom you purchased this machine if you need parts and service. Be sure to specify the machine model. Have your serial number at hand.

Serial Number: _____ Model: APC 328

Purchase Date: _____

Write the name and phone number of your distributor:

Be sure to register your purchase to activate your warranty

KNOW YOUR MACHINE

Operator Handle (1): Operator holds onto this handle to move the machine from one location to another.

Solution Tank Lid (2): This lid screws off so the tank can be filled. The solution fill hose is tethered to the lid, and hangs inside the arm of the Operator Handle.

Maid's tote and Recovery tank lid (3): This removable container holds often-used items and has a handle for easy carrying. The recovery tank lid sits under the maid's tote and covers the opening in the Recovery Tank. This is where the operator can access the tank to clean it and the ball float cage. The tank can be flushed out by running clean warm water into this opening and laying the open drain hose into a bucket or drain.

Recovery Hose (4): Waste water is picked-up through this hose.

Spray Hose (5): This hose delivers water from the machine to the cleaning tool.

Drain Hose (6): This hose is used to empty the recovery tank. NOTE: hold the end of the hose above the water level in the tank to avoid sudden, uncontrolled flow of waste water when you remove the cap, then lower the hose slowly to control the rate of discharge.

Quick Disconnect (7): Point of attachment for the Spray Hose (5).

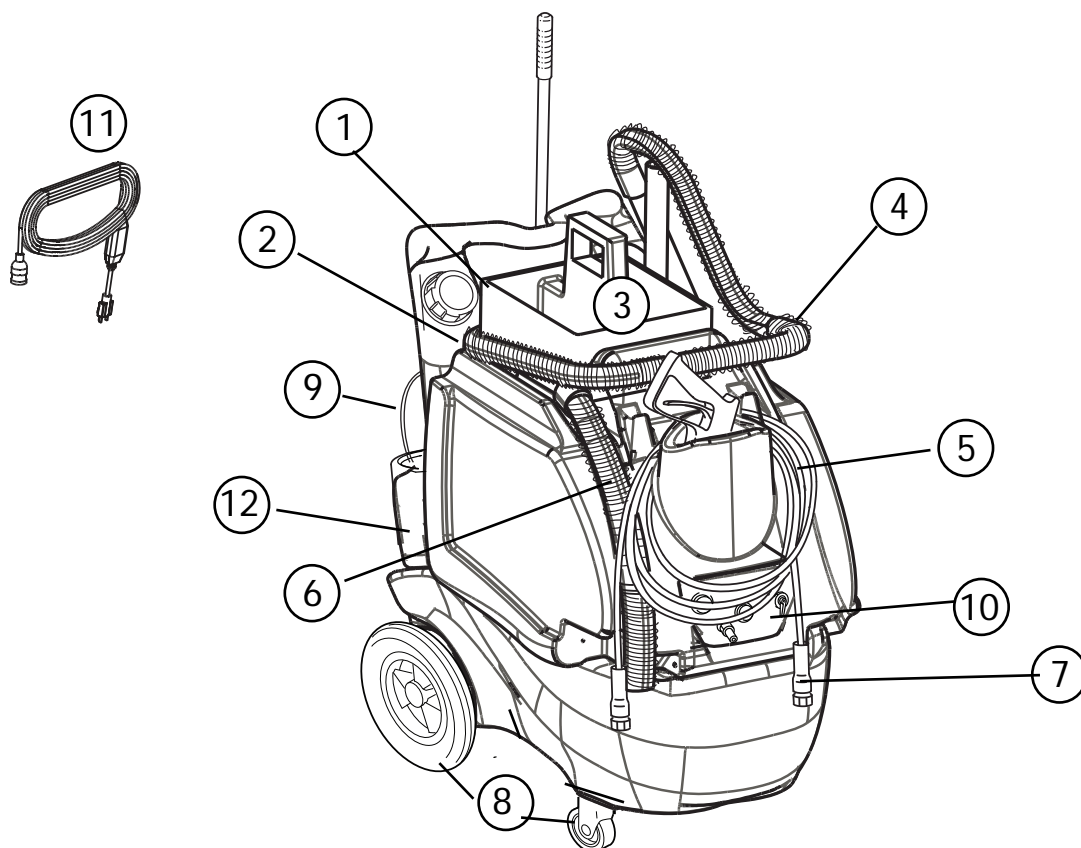
Castors and Wheels (8): Castors pivot for ease of steering, and large back wheels make it easy to roll the machine from location to location.

Chemical Feed Lines (9): These clear tubes connect the cleaning chemical containers to the machine where the chemical can be siphoned into the outlet water from the pump. Metering tips -- used to change the ratio of water to chemical -- are installed here.

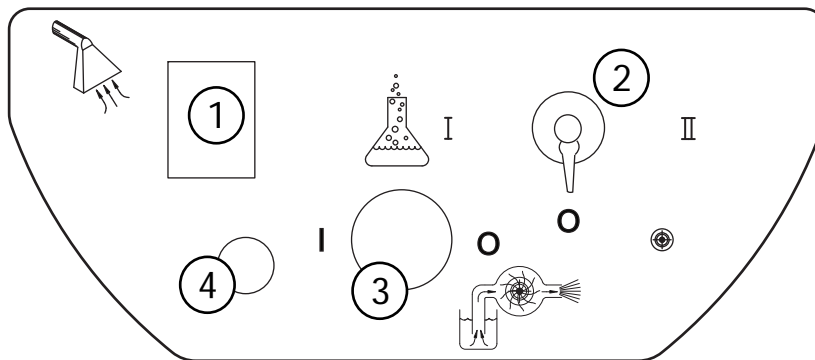
Switch Plate (10): The machine's on/off switches for the vacuum and for the pump are located here and this is where the valve to change chemical feeds is located.

Power Cord (11): The 25 ft. power cord connects to a power cord pigtail on the rear of the machine.

Chemical Container Holders (12): Two molded-in bottle holders for chemical jugs.



KNOW YOUR SWITCH PLATE



Vacuum Switch (1): turns on the vacuum motor.

Chemical Valve (2): switches between the two chemical containers. When the selector is pointed straight down, the valve is off and neither chemical is selected. When the selector is pointed directly towards one or the other symbols, that chemical is selected.

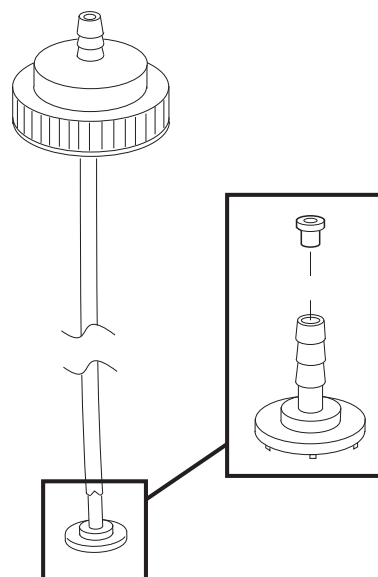
Solution Pump Switch (3): turns on the solution pump.

Quick Connect (4): this is where solution comes out of the machine and the attachment point for the solution hose.

METERING TIPS

The chemical metering tips allow you to select the ratio of chemical to water, as the water flows out of the machine. Insert the correct metering tip for the desired mixture into the chemical siphon tube.

METERING TIPS			
COLOR	HOLE SIZE	MIX RATION	FLOW RATE
Orange	0.007	1 to 128	7,81 ml per 1 l
Pink	0.012	1 to 64	19,53 ml per 1 l
Dark Green	0.014	1 to 50	23,44 ml per 1 l
Yellow	0.016	1 to 32	39,06 ml per 1 l
Light Blue	0.020	1 to 20	46,87 ml per 1 l
Burgandy	0.022	1 to 15	70,33 ml per 1 l
Black	0.048	1 to 5	156,27 ml per 1 l



SET-UP AND USE

- 1) Insert the appropriate metering tips into the chemical feed lines (see illustration, page 5).
- 2) Fill the holding tank with warm water (not exceeding 54 °C). **Do not** add any chemical to the tank.
- 3) Prepare the area for cleaning by emptying waste receptacles, clearing debris, removing paper products, blowing out vents, and sweeping floors.
- 4) Connect the 25 ft power cord to the pig-tail on the rear of the machine.
- 5) **PRIME THE PUMP:** Attach the priming hose to the outlet quick disconnect and place the open end of the hose into the recovery tank. Turn on the pump and let it run until the pump is completely primed (no visible air in the water stream). Turn the pump off.
NOTE: prime the machine before you place the chemical feed tubes into chemical containers.
- 6) Disconnect the priming hose and attach the solution hose to the quick disconnect.
- 7) Attach the spray gun to the other end of the solution line.
- 8) Place chemicals in the molded-in chemical bottle containers on the rear of the machine. Insert one of the feed lines into one of the chemical containers. Secure the line by screwing on the cap. The chemical will feed from whichever container the selector valve on the switch plate is turned towards and when the gun is used in the low pressure setting. Use chemicals with a pH of between 5 and 10. Never add chemicals to the clean water tank.
- 9) Set the spray gun to low pressure by sliding the pressure selector forward (low pressure = forward; high pressure = back).
- 10) Turn on the pump switch (push button) and spray through the gun for a few seconds to fill the line with solution.
- 11) Apply the chemical to the walls and fixtures from the bottom up. Spray the floor last as you work your way out of the room.
- 12) Allow the chemical to work for the proper amount of dwell time, according to the chemical manufacturer's directions. Agitate heavily soiled areas with a scrub brush.
- 13) Turn off the chemical injector valve by turning the selector to the down position.
- 14) Set the spray gun to high pressure and rinse the area from the top down.
- 15) Connect the vacuum hose, attach the squeegee, and turn on the vacuum (rocker switch).
- 16) Squeegee off the mirrors, pick up the liquid off the floor with the floor tool. If you have the optional blow dry hose, use it to dry the fixtures.
- 17) Drain the recovered water into a utility sink or toilet. **NOTE:** Keep the top of the drain hose higher than the water level in the tank to avoid uncontrolled discharge of water when you open the cap on the hose.

CAUTION

To avoid vacuum motor damage, always use a defoamer any time foam is present.

Before you turn on the vacuum always make sure the filter screen on the ball float is clean and that the ball can travel freely.

RE-PRIMING THE PUMP

If the pump loses prime between jobs, follow the instructions to PRIME THE PUMP, above. If that doesn't get water flowing, put the priming hose into the vacuum inlet hose barb and cover the rest of the space around the priming hose with your hand. Turn on the vacuum (with the pump also running) and let the suction of the vacuum assist in getting water into the pump.

MAINTENANCE

- 1) Use only approved chemicals at the recommended mix ratios. All chemicals should be added through the feed system and NOT added directly to the water in the solution tank to prevent possible damage to the pump, seals, or other components.
- 2) For optimum performance, flush the Chemical Feed lines after every job by replacing the chemical containers with containers of clear water and spraying through the gun until the fluid stream is clear. See the Maintenance Schedule, below.
- 3) The pump seals and/or valves in the high pressure pumps may need to be replaced after about 1000 hours of use, if the pump begins to lose performance or to leak. The pressure regulator valve may need to be when a drop in the spraying pressure at the tool is apparent.

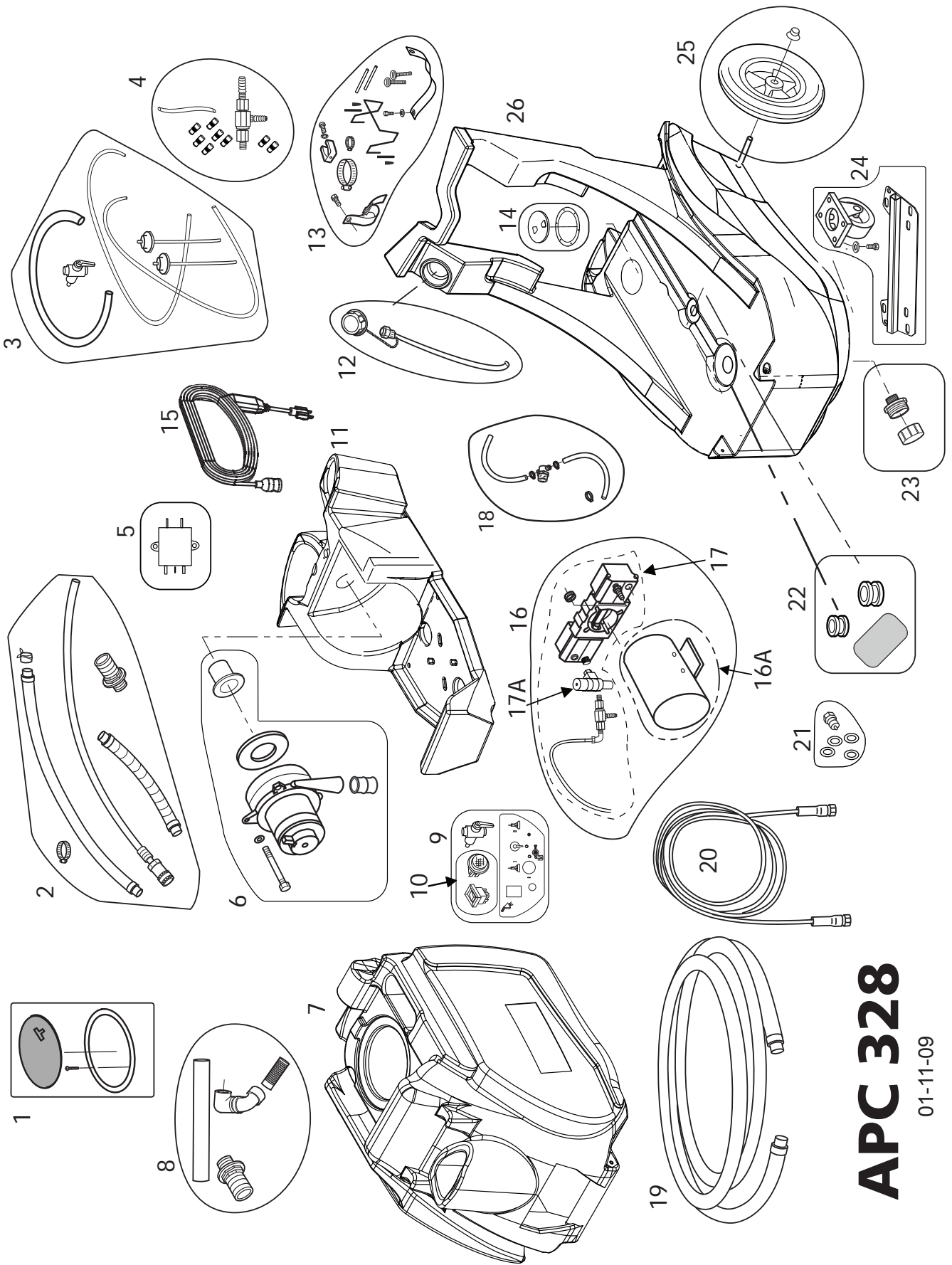
MAINTENANCE SCHEDULE

ITEM	DAILY	WEEKLY	YEARLY
Flush chemical lines	X		
Check/clean vac inlet filter	X		
Clean solution filter		X	
Check vacuum motor airways		X	
Check pump for leaks		X	
Check vacuum motor brushes *			X

* Have your distributor check the carbon brushes once a year or after about 500 hours of operation.

TECHNICAL SPECIFICATIONS (as installed and tested on the unit)

MODELS	600303281, 600303282
VACUUM MOTOR(s):	Two stage, 8 Amp
WATER LIFT:	23 kpa
AIR FLOW:	100 CFM
TANK CONSTRUCTION:	Rotationally molded polyethylene
HEIGHT:	98 cm X 59 X 86.5 cm
WEIGHT	50 KG



APC 328

01-11-09

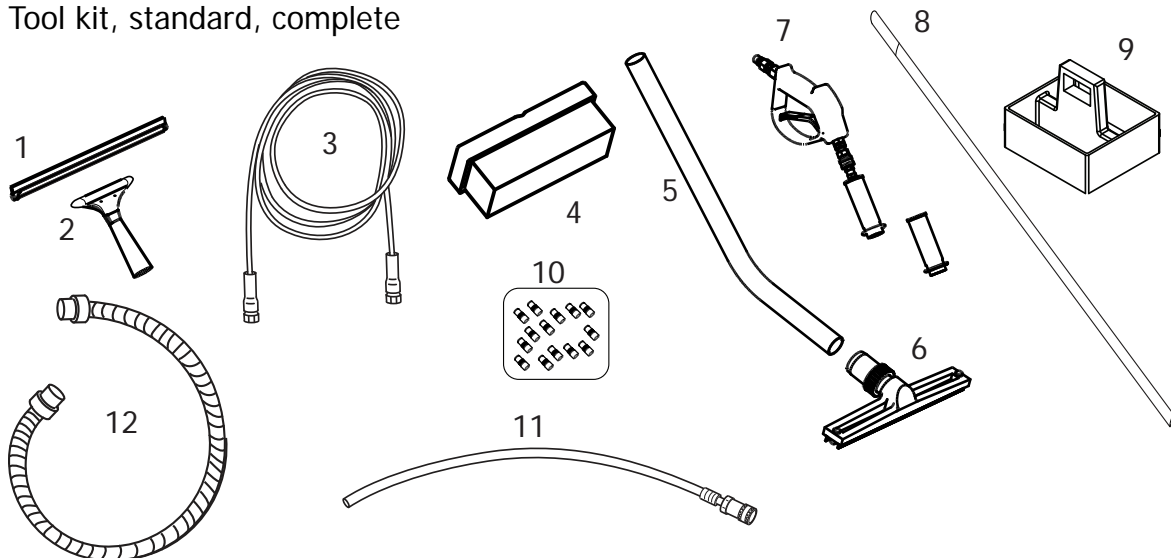
ITEM	PART No.	DESCRIPTION
1	600732869	Lid and gasket, recovery tank
2	600732846	Hose kit, drain, priming and vac inlet
3	600732882	Hose kit, water and chemical metering
4	600732871	Metering tips and chemical injector
5	600732889	Filter, electrical noise suppression
6	600732883	Vacuum motor kit, with gasket and hose
7	600732884	Tank, recovery, complete
8	600732874	Vacuum inlet kit
9	600732886	Switch plate kit, complete
10	600732885	Switch kit, two switches
11	600732876	Pallet, component mounting, complete
12	600732848	Lid, with fill hose, holding tank/base
13	600732858	Fasteners kit
14	600732856	Lid and ring, 4"
15	600732873	Power cord, EU
	600732887	Power cord, UK
16	600732866	Pump and motor, complete
16A	600732868	Motor, pump drive
17	600732865	Pump, solution, complete, no motor
17A	600732875	Pressure regulator, for solution pump
18	600732877	Filter, pump in-line, with hoses
19	600732854	Vacuum recovery hose, complete, 8 M
20	600732855	Solution hose assembly, 8 M
21	600732847	Quick disconnect kit, with washers
22	600732859	Grommets and foam
23	600732849	Cap, drain, and brass fitting
24	600732850	Castor kit, includes bracket
25	600732852	Wheel kit
26	600732879	Holding tank/base, complete

MISCELLANEOUS PARTS

600732872	Label kit, APC 328
600732888	Repair kit, solution pump

TOOLS AND ACCESSORIES

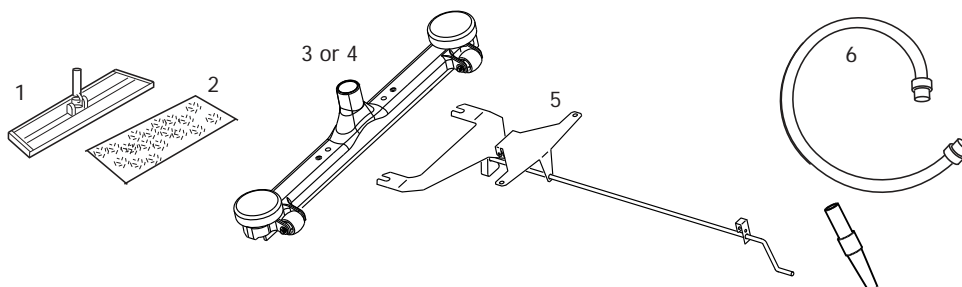
Tool kit, standard, complete



1	600732862	Squeegee, hand held
2	600732893	Handle, for hand held squeegee
3	600732855	Solution hose
4	600732863	Brush, dual surface
5	600732894	Handle, two piece
6	600732895	Squeegee, for floor
7	600732896	Gun, spray, dual pressure
8	600732860	Handle, straight, black
9	600732881	Tote, carry all
10	600732853	Metering tips, two each
11	600752127	Priming hose, for solution pump
12	600732854	Recovery hose

Optional accessories

1	600732897	Frame, micro fiber mop
2	600732898	Mop, micro fiber (6)
3	56380888	Squeegee assembly, 61 cm
4	56209089	Squeegee assembly, 76 cm
5	600732901	Mount assembly, mechanical, for squeegee heads
6	600732864	Blower hose assembly, with nozzle



Overenstemmelseserklæring
Declaration of conformity
Konformitätserklärung
Declaración de conformidad
Atbilstības deklarācija
Megfelelősségi nyilatkozat
Certifikat o ustreznosti

Declaration de conformité
Verklaring van overeenstemming
Dichiarazione di conformità
Vastavussertifikaat
Deklaracja zgodności
Försäkran om överensstämmelse

Samsvarserklæring
Vaatimustenmukaisuusvakuutus
Atitikties deklaracija
Osvědčení o shodě
Certifikát súladu

Modell/ Modèle/ Model/ Malli/ Modelo/ Μοντέλο/ Modelo/ Modelis/Модель: APC 328C
Type/ Tyypit/ Tipo/ Τύπος/ Tüüp/ Tipas/ Tips/ Typ/ Típus/ Тип/ Tip: Carpet Cleaner
Year of Affixing CE marking: 2010
Brand: Nilfisk

D Der Unterzeichner bestätigt hiermit dass die oben erwähnten Modelle gemäß den folgenden Richtlinien und Normen hergestellt wurden.

GB The undersigned certify that the above mentioned model is produced in accordance with the following directives and standards.

DK Undertegnede attesterer herved, at ovennævnte model er produceret i overensstemmelse med følgende direktiver og standarder.

N Undertegnede attesterer att ovennevnte modell är produsert i överensstemmelse med följande direktiv og standarder.

E El abajo firmante certifica que los modelos arriba mencionados han sido producidos de acuerdo con las siguientes directivas y estandares.

I Il sottoscritto dichiara che i modelli sopra menzionati sono prodotti in accordo con le seguenti direttive e standard.

EST Allakirjutanu kinnitab, et ülalnimetatud mudel on valmistatud kooskõlas järgmiste direktiivide ja normidega.

LV Ar šo tiek apliecināts, ka augstākminētais modelis ir izgatavots atbilstoši šādām direktīvām un standartiem.

CZ Niže podepsaný stvrzuje, že výše uvedený model byl vyroben v souladu s následujícími směrnicemi a normami.

SLO Spodaj podpisani potrjujem, da je zgoraj omenjeni model izdelan v skladu z naslednjimi smernicami in standardi.

F Je soussigné certifie que les modèles ci-dessus sont fabriqués conformément aux directives et normes suivantes.

NL Ondergetekende verzekert dat de bovengenoemde modellen geproduceerd zijn in overeenstemming met de volgende richtlijnen en standaards.

FIN Allekirjoittaja vakuuttaa että yllämainittu malli on tuotettu seuraavien direktiivien ja standardien mukaan.

S Undertecknad intygar att ovannämnda modell är producerad i överensstämmelse med följande direktiv och standarder.

GR Ο κάτωθι υπογεγραμμένος πιστοποιεί ότι η παραγωγή του προαναφερθέντος μοντέλου γίνεται σύμφωνα με τις ακόλουθες οδηγίες και πρότυπα.

P A presente assinatura serve para declarar que os modelos supramencionados são produtos em conformidade com as seguintes directivas e normas.

LT Toliau pateiktu dokumentu patvirtinama, kad minėtas modelis yra pagamintas laikantis nurodytų direktyvų bei standartų.

PL Niżej podpisany zaświadcza, że wymieniony powyżej model produkowany jest zgodnie z następującymi dyrektywami i normami.

H Alulírottak igazoljuk, hogy a fent említett modellt a következő irányelvek és szabványok alapján hoztuk létre.

SK Dolu podpísaný osvedčuje, že hore uvedený model sa vyrába v súlade s nasledujúcimi smernicami a normami.

EC Low Voltage Directive 2006/95/EC
EC EMC Directive 2004/108/EC

EN 60335-1, EN 60335-2-68
EN 61000, EN 50366, EN 55014-1,-2

This product is declared on our sole responsibility.



7.6.2010

Don Legatt, Engineering Director
Manufacturer :
Nilfisk-Advance, Inc.
14600 21st Avenue North
Plymouth, MN 55447 USA

Nilfisk-Advance A/S
Sognevej 25
DK-2605 Brøndby, Denmark

Nilfisk-Advance A/S



Nilfisk
setting standards

Nilfisk-Advance A/S
Sognevej 25
DK-2605 Brøndby
Denmark
Tel: +45 43 23 81 00
Fax: +45 43 43 77 00
www.nilfisk-advance.com