



POSEIDON 8



Nilfisk ALTO

Why Compromise

(EN)	Operating Instructions	1-16
(DE)	Betriebsanleitung	17-32
(FR)	Notice d'utilisation	33-48
(NL)	Gebruiksaanwijzing	49-64
(IT)	Istruzioni sull'uso	65-80
(NO)	Driftsinstruks	81-96
(SV)	Bruksanvisning	97-112
(DA)	Driftsvejledning	113-128
(FI)	Käyttöohje	129-144
(SL)	Navodilo za uporabo	145-160
(HR)	Uputstvo za rad	161-176
(SK)	Prevádzkový návod	177-192
(CS)	Provozní návod	193-208
(PL)	Instrukcja obsługi	209-224
(HU)	Kezelési utasítás	225-240
(RU)	Руководство по эксплуатации	241-256
(ET)	Töö juhised	257-272
(LV)	Lietošanas instrukcijas	273-288
(LT)	Ekspluatacijos instrukcijos	289-304
(ES)	Instrucciones de manejo	305-320
(PT)	Instruções de operação	321-336
(EL)	Οδηγίες λειτουργίας	337-352
(TR)	Ýpletme kılavuzu	353-368



Contents

Symbols used to mark instructions	2
1 Important safety instructions	2
2 Description	2.1 Purpose	4
	2.2 Operating elements	4
3 Before starting the cleaner	3.1 Setting up the cleaner	4
	3.2 Connecting the high pressure hose (single user).....	5
	3.2.1 Connecting the high pressure hoses (2 users).....	5
	3.3 Connecting the water supply	5
	3.4 Electrical connection	6
	3.5 Antifreeze - before first use	6
4 Control / Operation	4.1 Connecting the spray lance to the spray gun	6
	4.2 Switching on the cleaner	6
	4.2.1 Switching on the cleaner when it is connected to a water supply	6
	4.2.2 Switching on the cleaner when it is connected to open tanks (suction mode).....	6
	4.3 Pressure regulation (Tornado Lance).....	7
	4.4 Pressure regulation on the machine.....	7
5 Applications and methods	5.1 Techniques	7
	5.1.1 Soaking	7
	5.1.2 Detergent and Foam	7
	5.1.3 Temperature	7
	5.1.4 Mechanical Effect	8
	5.1.5 High Water Flow or High Pressure	8
	5.2 Some typical cleaning tasks	8
	5.2.1 Agriculture	8
	5.2.2 Vehicle.....	8
	5.2.3 Buildings and Equipment.....	9
6 After using the cleaner	6.1 Switching off the cleaner	9
	6.2 Disconnecting supply lines	9
	6.3 Rolling up the electrical lead and storing accessories.....	10
	6.4 Storing the cleaner (below 0°C)	10
7 Maintenance	7.1 Maintenance plan	11
	7.2 Maintenance work	11
	7.2.1 Cleaning water inlet filter	11
	7.2.2 Checking the pump oil level	11
	7.2.3 Changing the pump oil	11
8 Troubleshooting	12
9 Further information	9.1 Recycling the cleaner	13
	9.2 Guarantee	13
	9.3 EU Declaration of Conformity	13
	9.4 Technical Data.....	13

**Symbols used to mark instructions**

Safety instructions in these operating instructions which must be observed to prevent risks to persons are marked with this danger symbol.



This indicates tips and instructions to simplify work and to ensure safe operation.



Before using the high-pressure cleaner, be sure to also read the enclosed operating instructions and keep them within reach at all times.



This symbol is used to mark safety instructions that must be observed to prevent damage to the machine and its performance.

1 Important safety instructions

**For your own safety**

The high-pressure cleaner may only be used by persons instructed in its use and who have been expressly authorised to do so.

Although extremely easy to operate, children should not be allowed to use the cleaner.

General

Use of the high-pressure cleaner is subject to the applicable local regulations.

Besides the operating instructions and the binding accident prevention regulations valid in the country of use, observe recognised regulations for safety and proper use.

Do not use any unsafe work techniques.

Transport

Transport of the high-pressure cleaner is easy on its large wheels.

For safe transport in and on vehicles we recommend to prevent the equipment from sliding and tilting by fixing it with belts.

For transport at temperatures around or below 0°C, anti-freeze pump should be drawn into the pump beforehand (see chapter 6).

Before starting the cleaner

If your 3-phase cleaner was supplied without a plug, have it fitted with a suitable 3-phase plug with earth conductor, by an electrician.

Before use, check that the high-pressure cleaner is safe and in proper condition.

Regularly check whether the power cord is damaged or shows signs of ageing.

Use the high-pressure cleaner only when the mains power lead is in a safe condition. (risk of electric shock if damaged!).

Check the rated voltage of the high-pressure cleaner before connecting it to the mains power supply. Ensure that the voltage shown on the rating plate corresponds to the voltage of the local mains power supply.

We strongly recommend that the power supply to the high pressure cleaner be connected via a residual current circuit breaker.

This device stops the supply of electricity if the leakage current to earth exceeds 30 mA for 30 ms or it has an earth tester circuit.

Operate the cleaner only in an upright position!

Please observe the regulations and provisions applicable in your country. Before putting the high-pressure cleaner into service, carry out a visual check of all the major components.

CAUTION!

High-pressure water jets can be dangerous if misused. The jet must not be directed at persons, animals, live electrical equipment or the cleaner itself.

Wear appropriate protective clothing and eye protectors.

Do not direct the jet towards yourself or towards other persons in order to clean clothes or footwear.

During operation of the cleaner, recoil forces are produced at the spraying device and, when the spray lance is held at an angle, a torque is also created. The spraying device must therefore be held firmly in both hands.

Do not use the cleaner when other people without protective clothing are in the working area.

Check that cleaning will not result in dangerous substances (e.g. asbestos, oil) being washed off the object to be cleaned and harming the environment.

Do not clean delicate parts made of rubber, fabric, etc. with the 0° jet. Keep some distance between high pressure nozzle and surface in order to prevent the surface from damage.

Do not use the high-pressure hose for lifting loads.

NOTE!

The maximum permissible working pressure and temperature are printed on the high-pressure hose.

Do not continue to use the cleaner if the mains power lead or high-pressure hose is damaged.

Ensure adequate air circulation. Do not cover the cleaner or operate it in inadequately ventilated rooms!



Store the cleaner where it will not be exposed to frost!

Never operate the cleaner without water. Even brief shortages of water result in severe dam-

age to the pump seals.

Water connection

This high pressure washer is only allowed to be connected with the drinking water mains, when an appropriate backflow preventer has been installed, Type BA according to EN 1717. The backflow preventer can be ordered under number 10641117 7,106411178,106411179,106411184. The length of the hose between the backflow preventer and the high pressure washer must be at least 12 metres (min diameter 3/4 inch) to absorb possible pressure peaks. Operation by suction (for example from a rainwater vessel) is carried out without backflow preventer. Recommended suction set: 61256. As soon as water has flown through the BA valve, this water is not considered to be drinking water any more



Operation

CAUTION!

Unsuitable extension leads can represent a source of danger. Always unwind cord from the reels completely to prevent the power cord overheating.

Plugs and connectors of mains power leads must be at least splash water-proof.

When using an extension cord, check the minimum cross-sections of the cable:

Cable length m	Cross section	
	<16 A	<25 A
up to 20 m	ø1.5mm ²	ø2.5mm ²
20 to 50 m	ø2.5mm ²	ø4.0mm ²

Do not damage the mains power lead (e.g. by driving over it, pulling or crushing it). Disconnect the power cord by pulling the plug only (do not pull or tug the power cord).

Electrical equipment



CAUTION!

Never spray electrical equipment with water: danger for persons, risk of short-circuiting.

The cleaner may only be connected to a correctly installed plug socket.

Switching on the cleaner may cause voltage fluctuations. Voltage fluctuations should not occur if the impedance at the transfer point is less than 0.15 Ω. If in doubt ask your local electricity supplier.

Maintenance and repair

CAUTION!

Always remove the plug from the mains plug socket before cleaning or carrying out maintenance work on the cleaner.

Carry out only the maintenance operations described in the operating instructions. Use only original Nilfisk-Alto spare parts. Do not make any technical modifications to the high-pressure cleaner.

Ensure that the machine is regularly serviced by Authorised Nilfisk-Alto dealers in accordance with the maintenance plan. Failure to do so will invalidate the warranty.

CAUTION!

High-pressure hoses, fittings and couplings are important for the safety of the cleaner. Use only high-pressure parts approved by the manufacturer!

The mains power lead must not differ from the version specified by the manufacturer and may only be changed by an electrician.

Please contact the Nilfisk-Alto service department or an authorised specialist work-shop for



all other maintenance or repair work!

Testing

The cleaner conforms to the German „Guidelines for Liquid Spray Jet Devices“. The high-pressure cleaner must be subjected to a safety examination in accordance with the „Accident Prevention Regulations for Working with Liquid Spray Jet Devices (BGR 500-2/2.36)“ as required, but at least every 12 months, by an authorised inspector.

After all repairs or modifications to electrical equipment, the protective conductor resistance, the insulation resistance and the leakage current must be measured. Furthermore, a visual inspection of the mains power lead, a voltage and current measurement and a function test must be carried out. Our after-sales service technicians are at your disposal as authorised inspectors.

The complete „Accident Prevention Regulations for Working with Liquid Spray Jet Devices“ are available from the Carl Hey-

manns Verlag KG, Luxemburger Strasse 449, 50939 Cologne or from the appropriate association of employers' liability insurances.

Unloader valve

Unacceptably high pressure is fed back without residual pressure via a bypass line into the intake line of the pump when the safety device is tripped.

The unloader valve is set and sealed at the factory and must not be adjusted.

2 Description

2.1 Purpose

This high-pressure cleaner has been designed for professional use in

- Agriculture
- industry
- transport industry
- automotive cleaning
- municipal facilities
- cleaning trade
- construction industry etc.

Chapter 5 describes the use of the high-pressure cleaner for various cleaning jobs.

Always use the cleaner as described in these operating instructions. Any other use may damage the cleaner or the surface to be cleaned or may result in severe injury to persons.

2.2 Operating elements



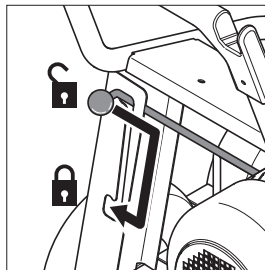
See fold-out page at front of these operating instructions.

- 1 Handle
- 2 Spray gun
- 3 Receptacle for Spray lance
- 4 Pressure regulation on spray lance
- 5 Spray lance

- 6 Supply water connection with water inlet filter
- 7 Check pump oil level
- 8 High pressure hose connection
- 9 Pressure regulation
- 10 Pressure gauge
- 11 Main switch
- 12 Receptacle for electrical lead

3 Before starting the cleaner

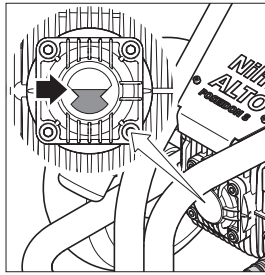
3.1 Setting up the cleaner



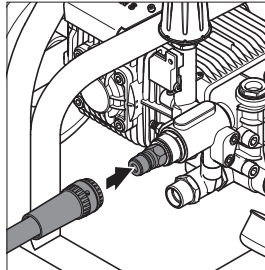
1. Before using the cleaner for the first time, check it carefully for any faults or damage.
2. Run the machine only when it is in perfect working condition.
3. Set the brake.



4. Check whether the oil level is between the minimum and maximum marks. If necessary, add oil (see chapter 9.4 for type of oil).

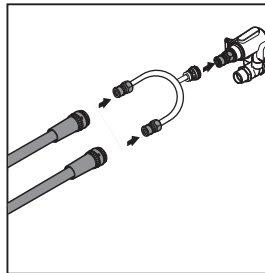


3.2 Connecting the high pressure hose (single user)



1. Put the quick connector of the high pressure hose onto the nipple on the cleaner.

3.2.1 Connecting the high pressure hoses (2 users)



1. Put the quick connector of the distributor manifold onto the nipple of the high pressure washer
2. Put the quick connector of the high pressure hoses onto the nipples of the distributor manifold.



CAUTION!

In a 2 user system, the nozzle size is different from a single user system. It is necessary to change to the matching spray lances and a distributor manifold. (see chapter 9.4)

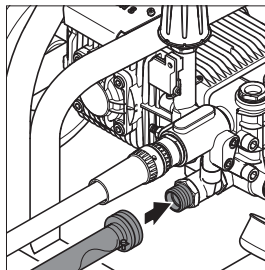
3.3 Connecting the water supply



See chapter 9.4 Technical Data for required quantity of water and water pressure.

In the case of poor water quality (sand, etc.), we recommend that a fine water filter is fitted in the water inlet.

We recommend the use of a textile-reinforced water hose with a nominal diameter of min. 3/4" (19 mm).



1. Rinse the water supply hose briefly in order to prevent sand and other dirt particles entering into the machine.
2. Connect water supply hose to the machine.
3. Open water tap.

EN

3.4 Electrical connection

The cleaner may only be connected to a correctly installed electrical installation.

When using a cord reel:

1. Release brake of the cord reel.
2. Unwind the cord completely.

1. Observe safety instructions in chapter 1.
2. Put the plug into the electrical socket.

3.5 Antifreeze - before first use

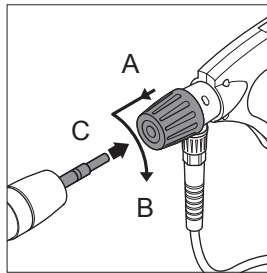
The machine is protected with anti-freeze from the factory. Catch the liquid discharging at

first (approx. 1 l) for re-use in a container.

4 Control / Operation

4.1 Connecting the spray lance to the spray gun

Always remove any dirt from the nipple before connecting the spray lance to the spray gun.

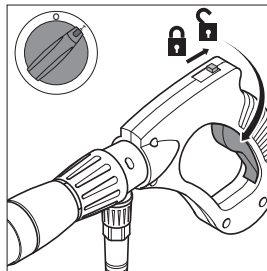


1. Pull the blue quick-release grip (A) of the spray gun forwards and lock it by turning it to the left.
2. Insert the nipple of the spray lance (C) into the quick-release connection and turn the blue quick-release grip to the right (B).
3. Pull the spray lance (or other accessory) forwards to check that it is securely attached to the spray gun.

4.2 Switching on the cleaner**4.2.1 Switching on the cleaner when it is connected to a water supply**

Operate the spray gun several times at short intervals to vent the system.

The cleaner switches off automatically after the spray gun has been closed. To start the cleaner again, operate the spray gun.

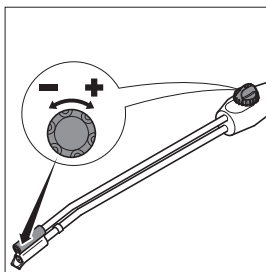


1. Main switch
Turn the switch to position „I“.
2. Unlock the spray gun and operate it.
3. Lock the spray gun even during short pauses.

4.2.2 Switching on the cleaner when it is connected to open tanks (suction mode)

1. Before connecting the suction hose to the cleaner, fill the hose with water. 2. Main switch
Turn the switch to position „I“.
 3. Unlock the spray gun and operate it.
- Max. suction height = 1.5 m.

4.3 Pressure regulation (Tornado Lance)

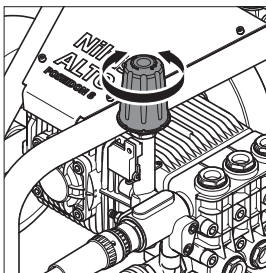


1. Turn the twist grip on the spray unit:

- **High pressure = clockwise (+)**
- **Low pressure = anticlockwise (-)**



4.4 Pressure regulation on the machine



1. Set pressure and water volume by twisting the pressure/volume regulation knob on the machine.

5 Applications and methods

5.1 Techniques

Efficient high pressure cleaning is achieved by following a few guidelines, combined with your own personal experience of specific cleaning tasks. Accessories and detergents, when correctly chosen, can increase the efficiency of your pressure washer. Here is some basic information about cleaning.

5.1.1 Soaking

Encrusted or thick layers of dirt can be loosened or softened up by a period of soaking. This is for example an ideal method within agriculture – for example, within pig sties. The ideal soaking method can be achieved via use of foam or simple alkaline detergent. Let the product lie on the dirty surfaces for around 30 minutes before pressure washing. The result will be a much quicker high pressure cleaning process.

5.1.2 Detergent and Foam

Foam or detergent should be applied onto dry surfaces so that the chemical product is in direct contact with the dirt. Detergents are applied from bottom to top, for example on a car bodywork, in order to avoid "super clean" areas, where the detergent collects in higher concentration and streams downwards. Let the detergent work for several minutes before rinsing but never let it dry on the surface being cleaned.

5.1.3 Temperature

Detergents are more effective at higher temperatures. Greases, oils and fats can be broken down more easily at higher temperatures also. Proteins can be cleaned at temperatures of around 60°C. Oils, traffic film around 70°C, and grease can be cleaned at 80°C - 90°C.



5.1.4 Mechanical Effect

In order to break down tough layers of dirt, additional mechanical effect may be required. Special lances and rotary or wash brushes offer this supplementary effect that cuts through dirt.

5.1.5 High Water Flow or High Pressure

High pressure is not always the best solution and high pressure may damage surfaces. The cleaning effect also depends upon water flow. Pressure levels of around 100 bar may be sufficient for vehicle cleaning (in association with hot water). Higher flow levels give the possibility to rinse and flush away large amounts of dirt easily.

5.2 Some typical cleaning tasks

5.2.1 Agriculture

Task	Accessories	Method
Stables Pig Pens, Sties	Chemical Foam Injectors Foam lance	<ol style="list-style-type: none"> 1. Soaking – apply foam to all surfaces (bottom to top) and wait for approx. 30 minutes. 2. Remove the dirt from surfaces with the high pressure lance or chosen accessory. Again, clean from bottom to top on vertical surfaces. 3. To flush away large quantities of dirt, change to low pressure mode and use the higher flow to push away the dirt. 4. Use recommended disinfectant products and methods to ensure hygiene. Apply DES 3000 disinfectant once the surfaces are perfectly clean.
Cleaning of walls, floors and equipment	Powerspeed lance Floor Cleaner	
Disinfectant	Detergents Universal Alkafoam Disinfectant DES 3000	
Machinery Tractors ploughs etc.	Detergent injection Powerspeed lances Curved lances and underchassis washers Brushes	<ol style="list-style-type: none"> 1. Apply detergent to vehicle or equipment surfaces in order to soften up dirt and grime. Apply from bottom to top. 2. Proceed with cleaning using the high pressure lance. Clean again from bottom to top. Use accessories to clean in difficult to reach places. 3. Clean fragile areas such as motors, rubber at lower pressure levels to avoid damage.

5.2.2 Vehicle

Task	Accessories	Method
Vehicle bodywork	Standard lance Detergent injection Curved lances and underchassis washers brushes Detergents Aktive Shampoo Aktive Foam Sapphire Super Plus Aktive Wax Allosil RimTop	<ol style="list-style-type: none"> 1. Apply detergent to vehicle or equipment surfaces in order to soften up dirt and grime. Apply from bottom to top. In cases of particularly dirty vehicles, pre-spray with a product such as Allosil in order to remove traces of insects etc, then rinse at low pressure and apply normal car cleaning detergent. Let detergents settle for 5 minutes before cleaning off. Metallic surfaces can be cleaned using RimTop. 2. Proceed with cleaning using the high pressure lance. Clean again from bottom to top. Use accessories to clean in difficult to reach places. Use brushes in order to add a mechanical cleaning effect. Short lances can help for cleaning of motors and wheel arches. Curved lances or undercarriage washers can be valuable for the cleaning of car underchassis and wheel arches. 3. Clean fragile areas such as motors, rubber at lower pressure levels to avoid damage. 4. Apply a liquid wax using the pressure washer in order to protect the bodywork from pollution.

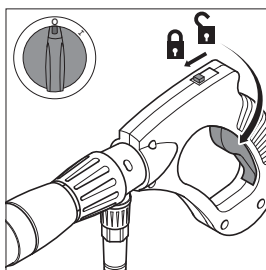
5.2.3 Buildings and Equipment

Task	Accessories	Method
General surfaces Metallic equipment	Foam injectors Standard lance Curved lances Tank cleaning head Detergents Intensive J25 Multi Combi Aktive Alkafoam Disinfectant DES 3000	<ol style="list-style-type: none"> 1. Apply thick foam over the surfaces to be cleaned. Apply on dry surfaces. Apply from top to bottom on vertical surfaces. Let the foam act for up to 30 minutes for the optimal effect. 2. Proceed with cleaning using the high pressure lance. Use applicable accessories. Use high pressure to dislodge large amounts of incrustated dirt or grime. Use lower pressure and high water volume in order to rapidly flush away loose dirt and rinse surfaces. 3. Apply DES 3000 disinfectant once the surfaces are perfectly clean. <p>Areas covered by amounts of loose dirt, such as animal remains in slaughterhouses, can be removed by using high water flow to flush away the dirt to evacuation pits or drains.</p> <p>Tank cleaning heads can be used to clean barrels, vats, mixing tanks etc. Cleaning heads may be hydraulically or electrically powered and give the possibility for automatic cleaning without a constant user.</p>
Rusted or damages surfaces prior to treatment	Wet Sandblasting equipment	<ol style="list-style-type: none"> 1. Connect the sandblasting lance to the pressure washer and place the suction tube in the sand. 2. Always wear protective equipment during sandblasting. 3. Spray the surfaces to be treated with the mix of water and sand. Rust, paint etc will be stripped off.

These are merely several examples of cleaning tasks that can be solved by a pressure washer in association with accessories and detergents. Each cleaning task is different. Please consult your local dealer or Nilfisk-Alto representative in order to discuss the best solution for your own cleaning tasks.

6 After using the cleaner

6.1 Switching off the cleaner



1. Turn the main switch to position „OFF“.
2. Close water tap.
3. Squeeze the spray gun handle until the cleaner is de-pressurised.
4. Lock the safety catch on the spray gun.

6.2 Disconnecting supply lines

1. Remove the water hose from the cleaner.
2. Pull out the plug from the electrical socket.



6.3 Rolling up the electrical lead and storing accessories

Risk of tripping!

To prevent accidents, always carefully roll up the electrical lead.

1. Wind up the high pressure hose.
2. Place the spray lance into the spray lance storage.

6.4 Storing the cleaner (below 0°C)



1. Store the cleaner in a dry room without danger of frost or protect as below:

CAUTION!

If the high-pressure cleaner is stored in a room with temperatures around or below 0°C, anti-freeze should be drawn into the pump beforehand:

1. Remove the water inlet hose from the cleaner.
2. Remove the spray lance.
3. Switch on the cleaner with the main switch in position „I“ and activate trigger on the spray gun.
Switch off the cleaner after max. 3 minutes.
4. Connect the suction hose to the water inlet of the cleaner

and place it in a tank containing anti-freeze.

5. Switch on the cleaner with the main switch in position „I“.
6. Hold the spray gun over the tank containing anti-freeze and operate it to start suction.
7. During suction operate the spray gun two or three times.
8. Lift the suction hose from the tank containing anti-freeze and operate the spray gun to pump off the remaining anti-freeze.
9. Switching off the cleaner
10. To avoid any risks, store the cleaner temporarily in a heated room before using it again.

7 Maintenance

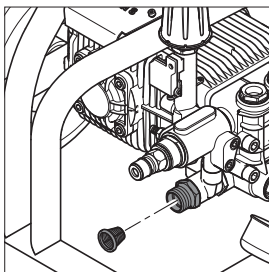


7.1 Maintenance plan

	Weekly	After the first 50 operating hours	Every six months or 500 operating hours	As required
7.2.1 Cleaning water inlet filter	●			●
7.2.2 Checking pump oil level	●			
7.2.3 Changing pump oil		●	●	

7.2 Maintenance work

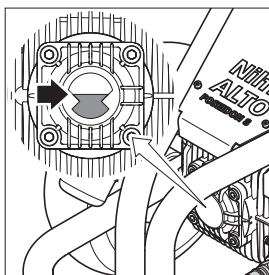
7.2.1 Cleaning water inlet filter



A water filter is fitted on the water inlet to prevent large particles of dirt from entering into the pump.

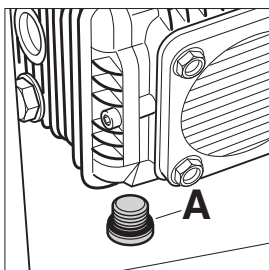
1. Unscrew the quick-release connection.
2. Remove the filter and rinse it. Replace damaged filter. Replace damaged filter.

7.2.2 Checking the pump oil level



1. Check whether the oil level is between the minimum and maximum marks. If necessary, add oil (see chapter 9.4 for type of oil).

7.2.3 Changing the pump oil



1. Unscrew the oil drain plug (A) and drain oil into a suitable container.
2. Check that the drain plug gasket is in place and reinstall drain plug.
3. Fill pump with proper grade and amount of oil.
Oil grade and capacity see chapter '9.4 Technical Data'.

EN 8 Troubleshooting

Fault	Cause	Remedy
Pressure drop	<ul style="list-style-type: none"> > Air in the system > High pressure nozzle blocked worn > Pressure control on the spray pipe is not set correctly 	<ul style="list-style-type: none"> • Vent the system by operating the spray gun several times at short intervals. If necessary, operate the cleaner for a short time without the high-pressure hose connected. • Clean/replace the high pressure nozzle • Set the required working pressure
Pressure fluctuations	<ul style="list-style-type: none"> > Pump draws in air (only possible in suction mode) > Lack of water > Water inlet hose is too long or its cross-section too small > Lack of water caused by blocked water filter > Lack of water because max. permissible suction height has not been heeded 	<ul style="list-style-type: none"> • Check that the suction set is air-tight • Open water tap • Use specified water inlet hose • Clean the water filter in the water connection (never work without water filter) • See instructions
The motor does not start when the cleaner is switched on	<ul style="list-style-type: none"> > The plug is not inserted properly, i.e. there is no current > The mains fuse is switched off 	<ul style="list-style-type: none"> • Check the plug, lead and switch and if necessary have them replaced by a trained electrician • Switch on the mains fuse
When the cleaner is switched on the motor buzzes without starting	<ul style="list-style-type: none"> > The mains voltage is too low or there is a phase failure. > The pump is blocked or frozen > Incorrect cross-section or length of the extension lead 	<ul style="list-style-type: none"> • Have the electrical connection checked • Contact the Nilfisk-Alto customer service • Use lead with correct cross section or length
The motor switches off	<ul style="list-style-type: none"> > The overload protection has been activated due to overheating or overloading of the motor > High-pressure nozzle is dirty 	<ul style="list-style-type: none"> • Check that the mains voltage and the cleaner voltage are the same. Switch off the cleaner and allow it to cool for at least 3 minutes • Change the high-pressure nozzle



9 Further information

9.1 Recycling the cleaner



Make the old cleaner unusable immediately.

1. Unplug the cleaner and cut the power cord.

Do not discard of electrical appliances with household waste.

As specified in European Directive 2002/96/EC on old electrical and electronic appliances, used electrical goods must be collected separately and recycled ecologically. Contact your local authorities or your nearest dealer for further information.

9.2 Guarantee

Our general conditions of business are applicable with regard to the guarantee. Subject to

change as a result of technical advances.

9.3 EU Declaration of Conformity



EU Declaration of Conformity

Product: High Pressure Cleaner
Type: POSEIDON 8
Description: 400 V 3~, 50 Hz, IP X5
The design of the unit corresponds to the following pertinent regulations: EC Machine Directive 98/37/EEG
 EC Low-voltage Directive 73/23/EEG
 EC EMV Directive 89/336/EEG
 EN 12100, EN 60335-2-79
 EN 55014-1, EN 55014-2, EN 61000-3-2
Applied harmonised standards: DIN EN 60335-2-79
Applied national standards and technical specifications:

Dipl. Ing. Wolfgang Nieuwkamp
 Tests and approvals

ALTO Deutschland GmbH
 Guido-Oberdorfer-Straße 2-8
 D-89287 Bellenberg

Bellenberg, 01.06.2006

9.4 Technical Data

POSEIDON					
		8-75	8-82	8-111 8-111 ST	8-125 8-125 ST
Voltage 400 V / 3~ / 50 Hz		EU	EU	EU	EU
Voltage 460 V / 3~ /60 Hz				US	
Voltage 460 V / 3~ /50 Hz				US	
Fuse (slow)	A	15.1	14.6	24	24.9
Power rating	kW	8.7	8.2	14	14.5
Working pressure	bar (Mpa)	200/20	155/16	180/18 (2610 psi)	160/16
Volume flow Q _{max}	l/h	1344	1560	2100 (9.1 gal/min)	2500
Water volume Q _{IEC}	l/h	1230	1500	2050 (9 gal/min)	2450
Max. water inlet temperature	°C/°F	60/86			
Max. water inlet pressure	bar (Mpa)	10/1		10/1(145psi)	
Dimensions l x w x h	mm	897x660x913		897 x 652 x 913/ 35.31x25.67x35.94(inches)	
Weight of cleaner	kg	106		130 (286lb)	
Noise level at a distance of 1m EN 60704-1	dB(A)	79.2		79.2	81.6
Sound power level LW _A	dB(A)	93.1		95/93.1	
Vibration ISO 5349	m/s ²	≤ 2,5			
Recoil forces	N	76	83	106	124
Oil quantity	l	1			
Oil type		SAE 30		SAE 15 W 40	
Nozzle size (1 user)		0.700	0.950	1200	1590
Nozzle size (2 users)		-	-	0.600/0.600	0.800/0.800

Nilfisk ALTO

Why Compromise

<http://www.nilfisk-alto.com>

HEAD QUARTER

DENMARK

Nilfisk-Advance Group
Sognevej 25
DK-2605 Brøndby
Tel.: +45 4323 8100
Fax: +45 4343 7700
E-mail: mail@nilfisk-advance.dk

SALES COMPANIES

AUSTRALIA

Nilfisk-ALTO
48 Egerton St.
P.O. Box 6046
Silverwater, N.S.W. 2128
Tel.: +61 2 8748 5966
Fax: +61 2 8748 5960

AUSTRIA

Nilfisk-Advance GmbH
Nilfisk-ALTO
Metzgerstrasse 68
5101 Bergheim/Salzburg
Tel.: +43 662 456 400-0
Fax: +43 662 456 400-34
E-mail: info@nilfisk-alto.at
www.nilfisk-alto.at

BELGIUM

Nilfisk-ALTO
Division of Nilfisk-Advance n.v.s.a.
Internationalelaan 55 (Gebouw C3/C4)
1070 Brussel
Tel.: +32 02 467 60 40
Fax: +32 02 466 61 50
E-mail: info.be@nilfisk-alto.com

CANADA

Clarke Canada
Part of the Nilfisk-Advance Group
4080 B Sladeview Crescent, Unit 1
Mississauga, Ontario L5L 5Y5
Tel.: +1 905 569 0266
Fax: +1 905 569 8586

CHINA

Nilfisk-Advance (Shenzhen) Ltd.
Blok 3, Unit 130 1001 Honghua Road
Int. Commercial & Trade Center
Fuitan Free Trade Zone
518038 Shenzhen
Tel.: +86 755 8359 7937
Fax: +86 755 8359 1063

CZECH REPUBLIC

ALTO Česká Republika s.r.o.
Zateckých 9
14000 Praha 4
Tel.: +420 24 14 08 419
Fax: +420 24 14 08 439
E-mail: info@alto-cz.com

DENMARK

Nilfisk-ALTO
Division of Nilfisk-Advance A/S
Industrivej 1
9560 Hadsund
Tel.: +45 7218 2100
Fax: +45 7218 2105
E-mail: [salg@nilfisk-alto.dk](mailto: salg@nilfisk-alto.dk)
E-mail: [service@nilfisk-alto.dk](mailto: service@nilfisk-alto.dk)
www.nilfisk-alto.dk

Nilfisk-ALTO Food division
Division of Nilfisk-Advance A/S
Blytækkervej 2
9000 Aalborg
Tel.: +45 7218 2100
Fax: +45 7218 2099
E-mail: scania.technology@nilfisk-alto.dk

FINLAND

Nilfisk-Advance Oy Ab
Piispantilankuja 4
02240 Espoo
Tel.: +358 207 890 600

Fax: +358 207 890 601
E-mail: jukka.lehtonen@nilfisk-alto.com
www.nilfisk-advance.fi

FRANCE

Nilfisk-ALTO
ALTO France SAS
Aéroparc 1
19 rue Icare
67960 Entzheim
Tel.: +33 3 88 28 84 00
Fax: +33 3 88 30 05 00
E-mail: info@nilfisk-alto.fr
www.nilfisk-alto.com

GERMANY

Nilfisk-ALTO
Division of Nilfisk-Advance AG
Guido-Oberdorfer-Strasse 10
89287 Beilenberg
Tel.: +49 0180 5 37 37 37
Fax: +49 0180 5 37 37 38
E-mail: info@nilfisk-alto.de
www.nilfisk-alto.de

GREECE

Nilfisk-Advance SA
8, Thoudidou str.
164 52 Argiroupolis
Tel.: +30 210 96 33443
Fax: +30 210 96 52187
E-mail: info.nilfisk-advance@clean.gr

HOLLAND

Nilfisk-ALTO
Division of Nilfisk-Advance BV
Camerastraat 9
3322 BB Almere
Tel.: +31 36 546 07 60
Fax: +31 36 546 07 61
E-mail: info@nilfisk-alto.nl
www.nilfisk-alto.nl

HONG KONG

Nilfisk-Advance Ltd.
2001 HK Worsteds Mills Ind'l Bldg.
31-39 Wo Tong Tsui St.
Kwai Chung
Tel.: +852 2427 5951
Fax: +852 2487 5828

HUNGARY

Nilfisk-Advance Kereskedelmi Kft.
II. Rákóczi Ferenc út 10
2310 Szigetszentmiklos-Lakihegy
Tel.: +36 2447 5550
Fax: +36 2447 5551
E-mail: info@nilfisk-advance.hu
www.nilfisk-advance.hu

ITALY

Nilfisk-ALTO
Divisione di Nilfisk-Advance A/S
Località Novella Terza
26862 Guardamiglio (LO)
E-mail: d.puglia@nilfisk-advance.it

JAPAN

Nilfisk-Advance Inc.
247 Nippa-cho, Kouhoku-ku
Yokohama, 223-0057
Tel.: +8145 548 2571
Fax: +8145 548 2541

MALAYSIA

Nilfisk-Advance Sdn Bhd
Sri 14, Jalan KIP 11
Taman Perindustrian KIP
Sri Damansara
52200 Kuala Lumpur
Tel.: +60 3 603 6275 3120
Fax: +60 3 603 6274 6318

NORWAY

Nilfisk-Advance AS
Bjørnerudveien 24
1266 Oslo
Tel.: +47 22 75 17 70
Fax: +47 22 75 17 71
E-mail: info@nilfisk-alto.no
www.nilfisk-alto.no

POLAND

Nilfisk-Advance Sp. Z.O.O.
05-800 Pruszków
ul. 3-go MAJA 8
Tel.: +48 22 738 37 50
Fax: +48 22 738 37 51
E-mail: info@nilfisk-alto.pl
www.nilfisk-alto.pl

PORTUGAL

Nilfisk-ALTO
Division of Nilfisk-Advance Lda.
Sintra Business Park
Zona Industrial Da Abrunheira
Edificio 1, 1º A
P2710-089 Sintra
Tel.: +35 808 200 537
Fax: +35 121 911 2679
E-mail: mkt@nilfisk-advance.es

RUSSIA

Nilfisk-Advance LLC
Vyatskaya str. 27, bld. 7
127015 Moscow
Tel.: +7 495 783 96 02
Fax: +7 495 783 96 03
E-mail: info@nilfisk-advance.ru

SINGAPORE

Nilfisk-Advance Pte. Ltd.
Nilfisk-ALTO Division
40 Loyang Drive
Singapore 508961
Tel.: +65 6 759 9100
Fax: +65 6 759 9133
E-mail: sales@nilfisk-advance.com.sg

SPAIN

Nilfisk-ALTO
Division of Nilfisk-Advance S.A.
Torre D'Ara
Paseo del Rengle, 5 Pl. 10
08302 Mataró
Tel.: +34 902 200 201
Fax: +34 93 757 8020
E-mail: mkt@nilfisk-advance.es

SWEDEN

Nilfisk Sverige AB
Member of Nilfisk-Advance Group
Aminogatan 18, Box 4029
431 04 Mölndal
Tel.: +46 31 706 73 00
Fax: +46 31 706 0000
info@nilfisk-alto.se
www.nilfisk-alto.se

TAIWAN

Nilfisk-Advance Taiwan Branch
No. 5, Wan Fang Road
Taipei
Tel.: +886 227 002 268
Fax: +886 227 840 843

THAILAND

Nilfisk-Advance Co. Ltd.
89 Soi Chokechai-Ruammitr
Viphavadee-Rangsit Road
Layao, Jatuchak, Bangkok 10900
Tel.: +66 2 275 5630
Fax: +66 2 691 4079

TURKEY

Nilfisk-Advance Profesyonel Temizlik
Ekipmanları Tic. A.Ş.
Necla Cad. No: 48
Yenisahra / Kadıköy
İstanbul
Tel.: +90 216 470 08 - 60
Fax: +90 216 470 08 - 63
www.nilfisk-advance.com

UNITED KINGDOM

Nilfisk-ALTO
Division of Nilfisk-Advance Ltd.
Bowerbank Way
Cilwilly Industrial Estate, Penrith
Cumbria CA11 9BQ
Tel.: +44 1 768 86 89 95
Fax: +44 1 768 86 47 13
E-mail: sales@nilfisk-alto.co.uk
www.nilfisk-alto.co.uk

USA

Nilfisk-Advance Inc.
14600 21st Avenue North
Plymouth, MN 55447-3408
Tel.: +1 763 745 3500
Fax: +1 763 745 3718
E-mail: info@nilfisk-advance-us.com
www.advance-us.com

VIETNAM

Nilfisk-Advance Representative Office
No. 46 Doc Ngu Str.
Ba Dinh Dist.
Hanoi
Tel.: +84 4 761 5642
Fax: +84 4 761 5643
E-mail: nilfisk@vnm.vn